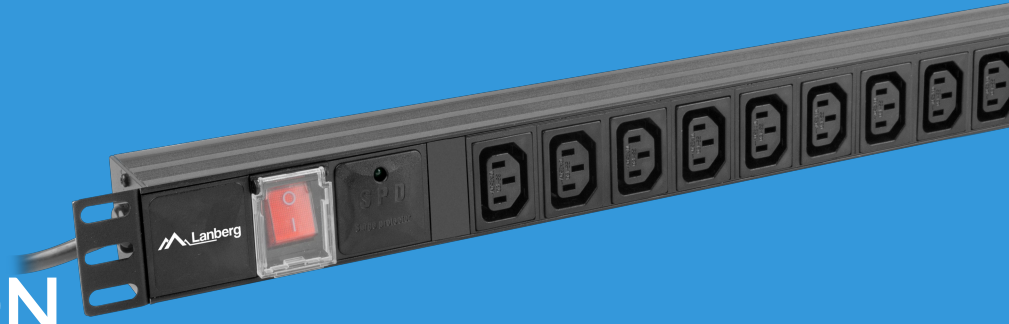


PDU-10I-0200-IEC-BK

POWER DISTRIBUTION UNIT



PRODUCT FEATURES:

- High current capacity
- Convenient installation
- Surge protection

PRODUCT SPECIFICATION:

Outlet type	IEC C13
Number of outlets	10
Plug type	IEC C14
Cable length	200 cm
Overcurrent protection	Automatic fuse
Number of fuses	1
Fuse response time	25 ns
Current rate	10 A
Maximum power	2 500 W
Protections	Surge protection
Colour	Black
Specialized	Rack
Switch	Yes
Size	19",
Mounting direction	Horizontal
Mounting holes	Yes
Material	Aluminium
Dimensions	45 x 431 x 44,45 mm
Weight	0,75 kg
Required amount of screws	4

