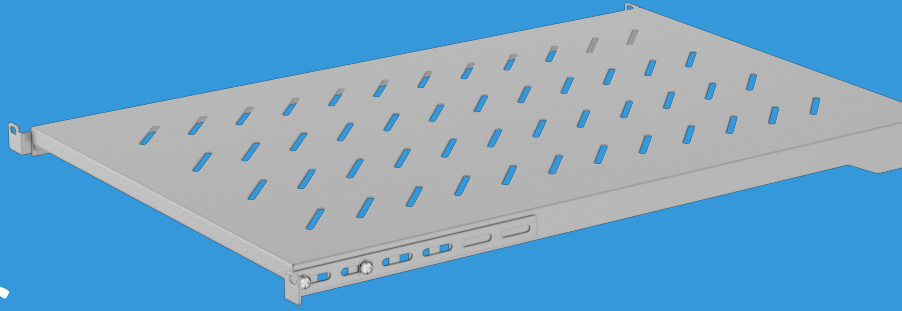


AK-1010-S

SHELF FOR 19" RACK CABINETS 1000MM



PRODUCT FEATURES:

- The perforated structure allows proper air circulation,
- Adjustable installation depth of 710 - 870 mm,
- Four-point mounting, M6 screws included,
- Load capacity up to 25KG.

PRODUCT SPECIFICATION:

Type	Shelf
Size	19",
ICT height	1 U
Maximum static load	25 kg
Material	Steel
Colour	Grey RAL7035
Depth	700 mm
Width	482,6 mm
Height	45 mm
Weight	2,88 kg
Required amount of screws	4