



Cable ID: PCF5-10CC-2000-S

Date / Time: 07/04/2019 02:56:38 PM

Headroom 4.4 dB (NEXT 36-78)

Test Limit: TIA Cat 5e Channel

Cable Type: Cat 5e F/UTP

NVP: 69.0%

Software Version: V6.2 Build 1

Limits Version: V7.2

Calibration Start Date:

Main (Module): 12/03/2018

Remote (Module): 12/03/2018

Test Summary: PASS

Model: DSX-8000

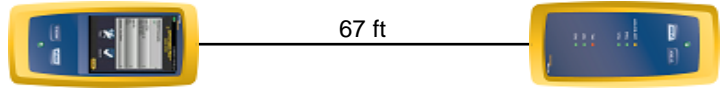
Main S/N: 1820302

Remote S/N: 1824298

Main Adapter: DSX-CHA804

Remote Adapter: DSX-CHA804

Length (ft), Limit 328	[Pair 36]	67
Prop. Delay (ns), Limit 555	[Pair 12]	101
Delay Skew (ns), Limit 50	[Pair 12]	2
Resistance (ohms)	[Pair 45]	12.35
Insertion Loss Margin (dB)	[Pair 36]	15.5
Frequency (MHz)	[Pair 36]	100.0
Limit (dB)	[Pair 36]	24.0



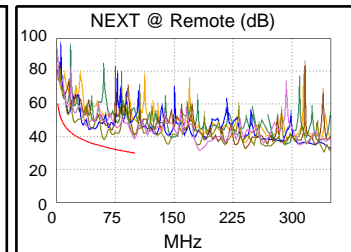
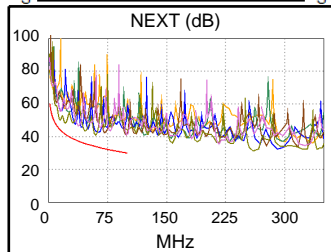
Wire Map (T568B)

PASS

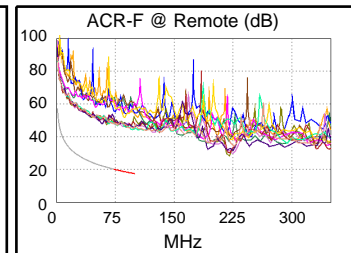
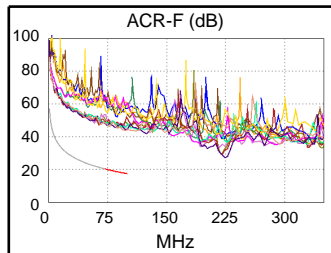


Worst Case Margin Worst Case Value

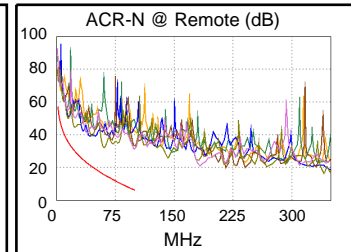
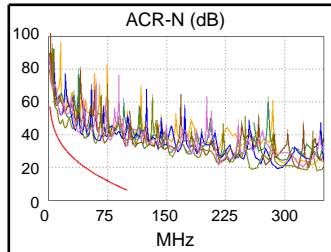
PASS	MAIN	SR	MAIN	SR
Worst Pair	36-78	36-78	45-78	36-78
NEXT (dB)	5.8	4.4	10.6	4.5
Freq. (MHz)	14.4	60.3	99.8	60.5
Limit (dB)	44.4	33.9	30.1	33.8
Worst Pair	78	78	45	78
PS NEXT (dB)	7.1	6.8	10.7	9.6
Freq. (MHz)	14.8	60.3	99.3	99.8
Limit (dB)	41.2	30.9	27.1	27.1



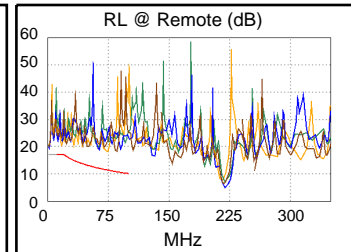
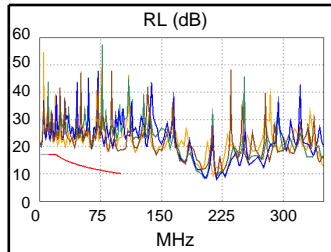
PASS	MAIN	SR	MAIN	SR
Worst Pair	45-36	78-36	78-45	45-78
ACR-F (dB)	25.9	25.7	26.1	26.7
Freq. (MHz)	64.0	57.8	97.5	98.0
Limit (dB)	21.3	22.2	17.6	17.6
Worst Pair	36	36	45	78
PS ACR-F (dB)	26.3	26.9	27.4	27.0
Freq. (MHz)	64.8	57.8	95.8	99.0
Limit (dB)	18.2	19.2	14.8	14.5



N/A	MAIN	SR	MAIN	SR
Worst Pair	36-78	36-78	36-45	45-78
ACR-N (dB)	10.9	14.3	26.4	24.9
Freq. (MHz)	14.3	14.3	99.0	99.8
Limit (dB)	35.9	35.9	6.3	6.1
Worst Pair	78	78	45	45
PS ACR-N (dB)	12.2	14.3	26.3	25.4
Freq. (MHz)	14.3	14.0	99.3	99.8
Limit (dB)	32.9	33.1	3.2	3.1



PASS	MAIN	SR	MAIN	SR
Worst Pair	12	12	12	12
RL (dB)	3.9	3.4	7.4	6.7
Freq. (MHz)	22.1	17.1	84.0	74.0
Limit (dB)	16.6	17.0	10.8	11.3



Compliant Network Standards:

10BASE-T	100BASE-TX	100BASE-T4
1000BASE-T	2.5GBASE-T	ATM-25
ATM-51	ATM-155	100VG-AnyLan
TR-4	TR-16 Active	TR-16 Passive