



### Cable ID: PCF8-10CU-0200

Test Limit: ISO11801 Channel Class I (+All)

Limits Version: V7.8

Date / Time: 11/30/2023 04:00:29 PM

Operator: QC

Headroom 15.1 dB (NEXT 3,6-4,5)

Cable Type: Cat 8 S/FTP

NVP: 72.0%

Main: Versiv

S/N: 1824298

Software Version: V6.9 Build 2

Calibration Date: 12/02/2022

Adapter: DSX-8000 (DSX-CHA804)

S/N: 23050129

Remote: Versiv

S/N: 1820302

Software Version: V6.9 Build 2

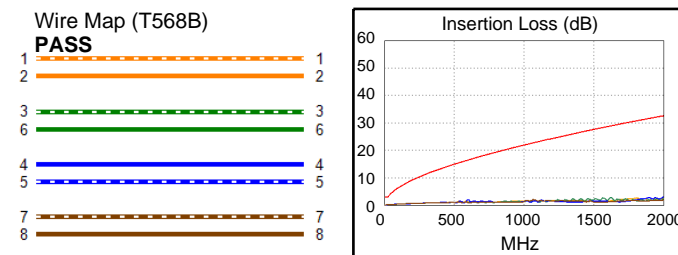
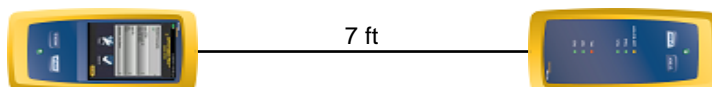
Calibration Date: 12/02/2022

Adapter: DSX-8000R (DSX-CHA804)

S/N: 23050130

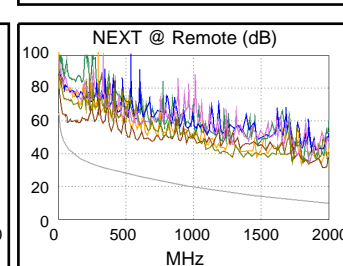
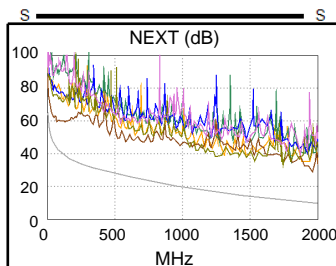
### Test Summary: PASS

Length (ft)	[Pair 1,2]	7
Prop. Delay (ns), Limit 169	[Pair 1,2]	10
Delay Skew (ns), Limit 16	[Pair 1,2]	0
Resistance (ohms), Limit 6.40	[Pair 1,2]	0.37
Resist. Unbal. (ohms), Limit 0.200	[Pair 3,6]	0.015
Resist. P2P Unbal. (ohms), Limit 0.200	[Pair 1,2-3,6]	0.093
Insertion Loss Margin (dB)	[Pair 4,5]	29.1
Frequency (MHz)	[Pair 4,5]	1946.0
Limit (dB)	[Pair 4,5]	32.2

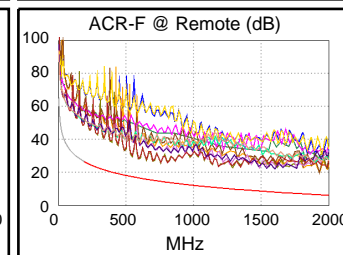
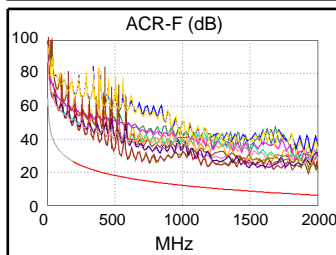


#### Worst Case Margin Worst Case Value

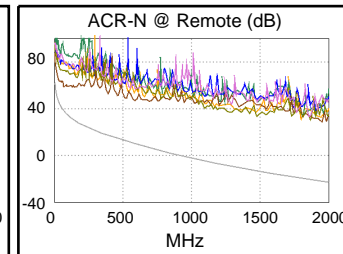
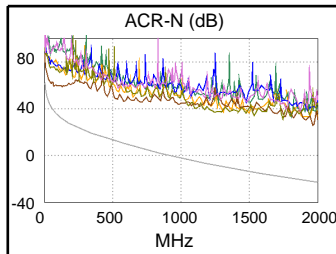
N/A	MAIN	SR	MAIN	SR
Worst Pair	3,6-4,5	3,6-4,5	3,6-4,5	3,6-4,5
<b>NEXT (dB)</b>	15.1	15.1	18.1	20.0
Freq. (MHz)	5.1	29.3	1966.	1912.
Limit (dB)	62.1	49.6	9.9	10.3
Worst Pair	3,6	3,6	4,5	3,6
<b>PS NEXT (dB)</b>	17.6	17.7	20.9	20.8
Freq. (MHz)	5.1	4.8	1966.	1910.
Limit (dB)	59.1	59.6	6.9	7.3



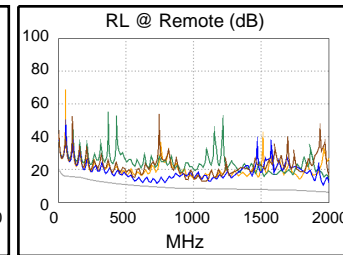
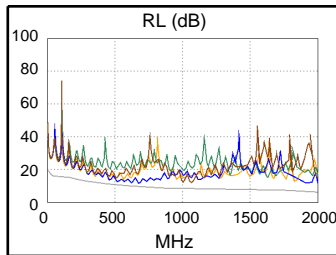
PASS	MAIN	SR	MAIN	SR
Worst Pair	3,6-4,5	3,6-4,5	3,6-1,2	1,2-3,6
<b>ACR-F (dB)</b>	10.8	10.7	12.9	13.6
Freq. (MHz)	596.0	701.0	1930.	1934.
Limit (dB)	16.5	15.1	6.3	6.2
Worst Pair	4,5	4,5	3,6	3,6
<b>PS ACR-F (dB)</b>	13.4	13.4	15.2	14.0
Freq. (MHz)	596.0	596.0	1934.	1932.
Limit (dB)	13.5	13.5	3.2	3.2



N/A	MAIN	SR	MAIN	SR
Worst Pair	3,6-4,5	3,6-4,5	3,6-4,5	3,6-4,5
<b>ACR-N (dB)</b>	18.0	18.4	48.3	49.3
Freq. (MHz)	5.1	29.3	1966.	1910.
Limit (dB)	59.1	46.1	-22.5	-21.5
Worst Pair	3,6	3,6	3,6	3,6
<b>PS ACR-N (dB)</b>	20.5	20.6	51.0	50.5
Freq. (MHz)	5.1	4.8	1964.	1908.
Limit (dB)	56.1	56.6	-25.4	-24.5



PASS	MAIN	SR	MAIN	SR
Worst Pair	4,5	4,5	7,8	4,5
<b>RL (dB)</b>	5.6	4.9	3.8	4.9
Freq. (MHz)	1950.	1950.	1063.	1950.
Limit (dB)	6.4	6.4	8.0	6.4



Compliant Network Standards:  
 10BASE-T      100BASE-TX      100BASE-T4  
 1000BASE-T    2.5GBASE-T      5GBASE-T  
 10GBASE-T    25GBASE-T      40GBASE-T  
 ATM-25        ATM-51            ATM-155  
 100VG-AnyLan    TR-4              TR-16 Active  
 TR-16 Passive



**Cable ID: PCF8-10CU-0200**

**Test Limit: ISO11801 Channel Class I (+All)**

Limits Version: V7.8

Date / Time: 11/30/2023 04:00:29 PM

Operator: QC

**Headroom 15.1 dB (NEXT 3,6-4,5)**

Cable Type: Cat 8 S/FTP

NVP: 72.0%

Main: Versiv

S/N: 1824298

Software Version: V6.9 Build 2

Calibration Date: 12/02/2022

Adapter: DSX-8000 (DSX-CHA804)

S/N: 23050129

**Test Summary: PASS**

Remote: Versiv

S/N: 1820302

Software Version: V6.9 Build 2

Calibration Date: 12/02/2022

Adapter: DSX-8000R (DSX-CHA804)

S/N: 23050130

	Worst Case Margin		Worst Case Value	
	MAIN	SR	MAIN	SR
<b>PASS</b>				
Worst Pair	7,8	7,8	7,8	7,8
<b>TCL (dB)</b>	16.8	15.9	16.8	15.9
Freq. (MHz)	1754.	1746.	1754.	1746.
Limit (dB)	3.0	3.0	3.0	3.0
<b>N/A</b>				
Worst Pair			7,8-3,6	1,2-3,6
<b>CDNEXT (dB)</b>			18.1	18.0
Freq. (MHz)			993.0	1308.
Limit (dB)				
<b>N/A</b>				
Worst Pair			3,6	3,6
<b>CMRL (dB)</b>			5.7	5.5
Freq. (MHz)			690.0	584.0
Limit (dB)				
<b>PASS</b>				
Worst Pair	1,2	3,6	1,2	3,6
<b>ELTCTL (dB)</b>	11.3	13.2	11.3	13.2
Freq. (MHz)	1930.	1888.	1930.	1888.
Limit (dB)	3.0	3.0	3.0	3.0

